



Stylish Domes and Room in Room Structures for events, congresses and offices



Minimum assembly
and disassembly time



Rooms for 1 to 1000+ people



Optimal acoustics
& sound insulation



No fan noise



Sustainable and circular

THE CUBE 18

THE CUBE 18



General

These impressive square and rectangular Cube structures are large inflatable rooms and are available in different sizes. With their blocky design they have a sleek and futuristic appearance. The Cubes have one or more entrances depending on the size. These entrances can optionally be closed with soundproof curtains.

Applications

The Cube is ideal for exhibitions and conferences, for example, where you want to hold a workshop, break-out session or presentation with larger groups.

By using the Cube you can also divide a large space into several small spaces in a striking and original way, for example, which offer plenty of privacy for smaller sessions and are optimally sound-insulating due to the high and uniquely designed walls.

Acoustics And Soundproofing

Due to the design and insulating air layers, this dome structure offers optimal acoustics and soundproofing, so that several can be placed next to each other without sound transfer between workshop groups or the plenary part.

The small blower is also completely insulated, so that it cannot be heard at all.

Other Requirements

Only a normal power supply of 220V is required for the installation of the Cube Dome.

All our domes and structures meet the requirements for fire safety according to the DIN 4102 – B1 standard. The certificate is available on request.

Installation / Dismantling

The Cube dome can be installed and dismantled quickly and easily by our team. Because this can be done so quickly, it is also possible, for example, to convert a large plenary hall into a hall with various break-out areas in a short time, so that a hall can have multiple functions during an event day.

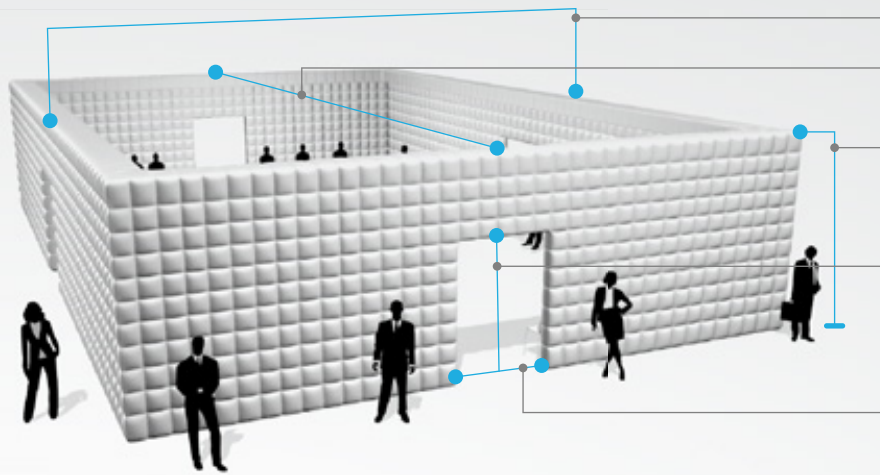
Led and Branding

The Inflatable Cube domes can be illuminated in any desired color by means of our LED bars (also remotely).

There are also different ways of branding the Cube Domes. For example:

- Placing banners or TVs in and around the Cube Dome.
- Hanging banners or posters (there are loops at a height of 2 meters both inside and outside the Cube Dome).
- Projecting logos or other messages by means of projection technique.
- The color of the LED lighting that can display a particular theme.





18 / 17 m (outer/inner)

12 / 11 m (outer/inner)

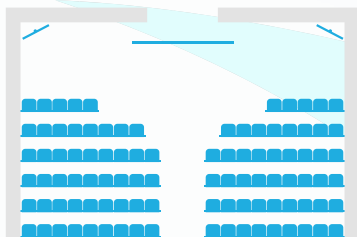
4 m

2.4 m 4 entrances

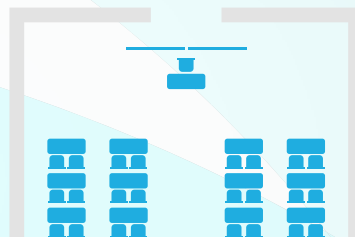
2.4 m 4 entrances



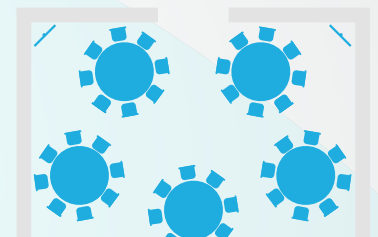
Length outer / inner	Width outer / inner	Height outer / inner	Surface inner	Max chairs	Color	LED	Setup time	Weight	Power
18 m 17 m	12 m 11 m	4 m 4 m	187 m ²	250-260	white	RGB bars of 1m	5-6 man hours	130 kg	220v 1500w no LED 2500w with LED



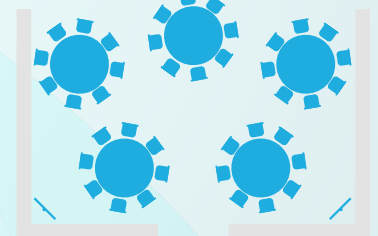
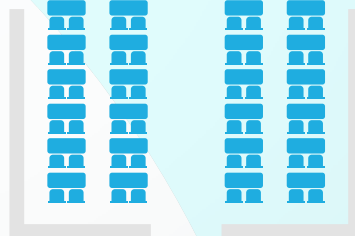
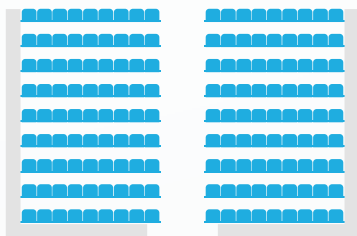
Theatre
~260 chairs



Classroom
~72 chairs



Banquet
~90 chairs



Contact

Phone:

+31 6 41 67 57 07
+31 6 12 98 62 31

E-mail:

info@quickspace.eu

QuickSpace B.V.

Lonnekerweg 298
7532 RD Enschede
Nederland



facebook.com/quickspacehomes



instagram.com/quickspace_eu

Phone:

+49 176 55071328

E-mail:

info@quickspace.de

QuickSpace Zeltsysteme GmbH

Laarstr. 17
D-48529 Nordhorn
Deutschland
USt-ID: DE 322458558

