



## Stylish Domes and Room in Room Structures for events, congresses and offices



Minimum assembly  
and disassembly time



Rooms for 1 to 1000+ people



Optimal acoustics  
& sound insulation



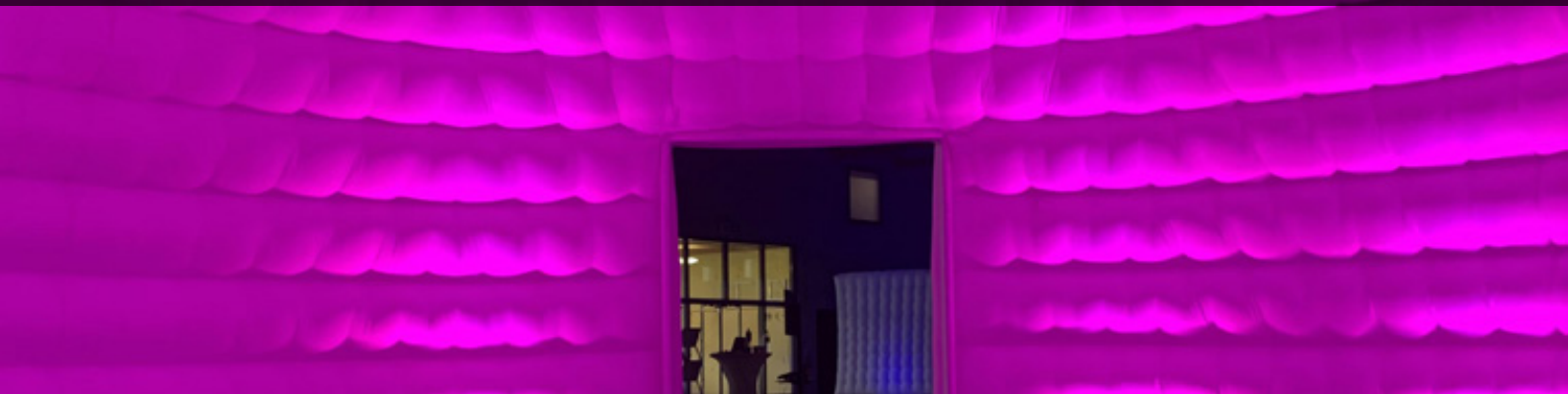
No fan noise



Sustainable and circular

THE DOME 10

# THE DOME 10



## General

This very striking igloo-shaped inflatable Dome forms a unique subspace for workshops or sub-sessions at conferences and events. The height and design make this a real eye-catcher. The Dome 10m can accommodate up to 75-80 seats in theater setting. The Dome 10m has 2 entrances and is equipped with ventilation holes, so that the ventilation inside is optimal. The dense and round design guarantees optimal acoustics and soundproofing.

## Installation / Dismantling

The Dome 10m can be quickly installed and disassembled by our team. For example, it is also possible to convert a large plenary hall into a hall with different break-out areas in a short time (for example lunch break), so that a hall can have multiple functions during an event day.

## Acoustics And Soundproofing

Due to the round and closed design of the Dome 10m and the different insulating air layers, this structure has optimal acoustics and soundproofing. This also allows multiple Domes to be placed next to each other, without sound transmission between the meetings. The Dome 10m is equipped with ventilation holes, so that the climate inside the dome remains the same as the climate outside the dome.

The small blower is also completely insulated, so that it cannot be heard at all.

## Other Requirements

Only a normal power supply of 220V is required for the installation of the Dome 10m.

All our domes and structures meet the requirements for fire safety according to the DIN 4102 – B1 standard. The certificate is available on request.

## Applications

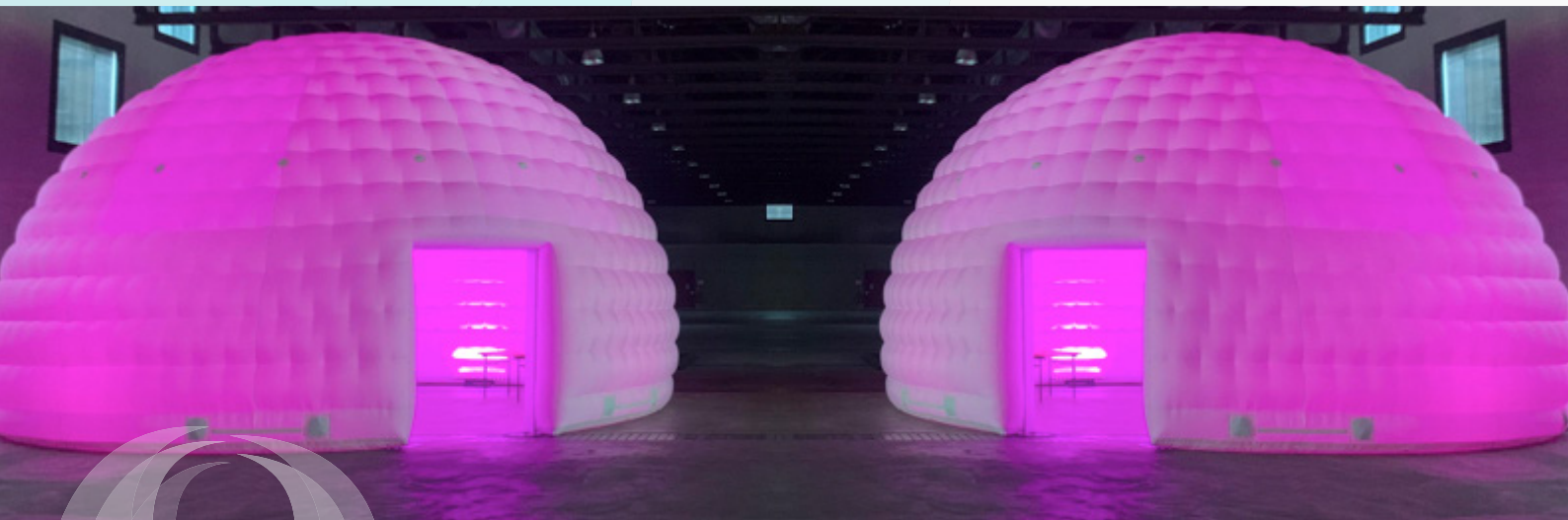
The Dome 10m diameter is very suitable for groups up to 75 – 80 people (seated in theater style). The Dome 10m can be used, for example, as a break-out space at conferences or trade fairs, or as a presentation space.

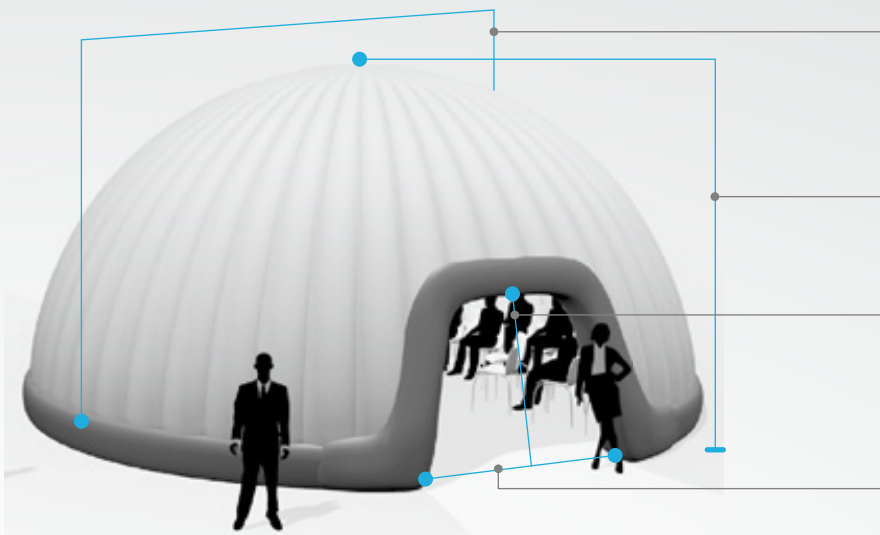
## Led and Branding

The Inflatable Dome 10m can be illuminated in any desired color by means of our LED bars (also remotely).

There are also different ways of branding the Dome 10m. For example:

- Placing banners or TVs in and around the Dome 10m.
- Hanging banners or posters (there are loops at a height of 2 meters both inside and outside the Dome 10m).
- Projecting logos or other messages by means of projection technique.
- The color of the LED lighting that can display a particular theme.





10 / 9 m (outer/inner)

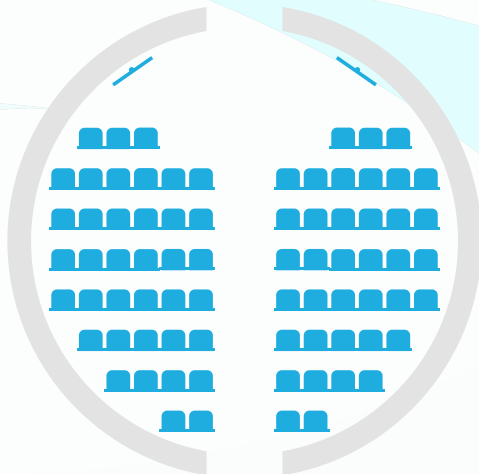
6 / 5.5 m (outer/inner)

2.2 m for both entrances

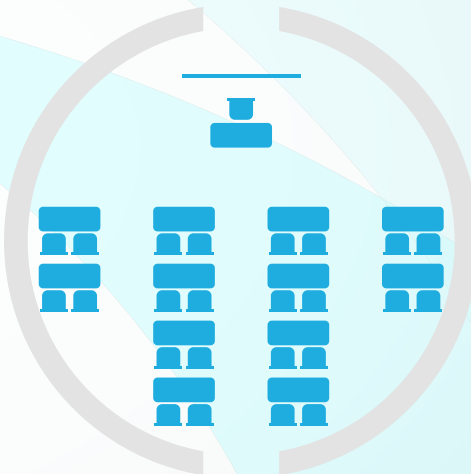
1.6 m for both entrances



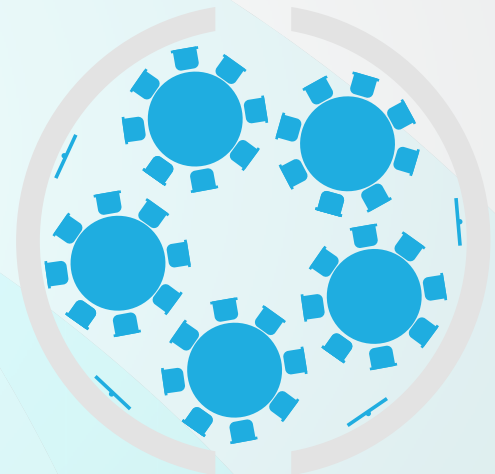
Length outer / inner	Width outer / inner	Height outer / inner	Surface inner	Max chairs	Color	LED	Setup time	Weight	Power
10 m 9 m	10 m 9 m	6 m 5.5 m	72 m <sup>2</sup>	70-76	white	RGB bars of 1m	2-3 man hours	110 kg	220v 1250w no LED 2000w with LED



Theatre  
~76 chairs



Classroom  
~24 chairs



Banquet  
~8 chairs

## Contact

### Phone:

+31 6 41 67 57 07  
+31 6 12 98 62 31

### E-mail:

info@quickspace.eu

### QuickSpace B.V.

Lonnekerweg 298  
7532 RD Enschede  
Nederland



facebook.com/quickspace\_domes



instagram.com/quickspace\_eu

### Phone:

+49 176 55071328

### E-mail:

info@quickspace.de

### QuickSpace Zeltsysteme GmbH

Laarstr. 17  
D-48529 Nordhorn  
Deutschland  
USt-ID: DE 322458558

